

Butler Road

Harrow • Middlesex • HA1 4DS

PCM: £1,650 PCM



coopers
est 1986



We are delighted to present this GROUND FLOOR maisonette situated just a short walk away from West Harrow Station and Harrow on the Hill Station (MET LINE). The property briefly comprises; entrance hallway, two double bedrooms, family bathroom and large kitchen with integrated white goods. Other benefits include double glazing and a private garden.

Available in April and offered unfurnished.

Local authority: London Borough of Harrow
Council tax: Band C

Ground floor maisonette

Two spacious bedrooms

■ Walking distance to West Harrow & Harrow on the Hill Station

Private garden

Stylish kitchen

Off street parking

Gas central heating

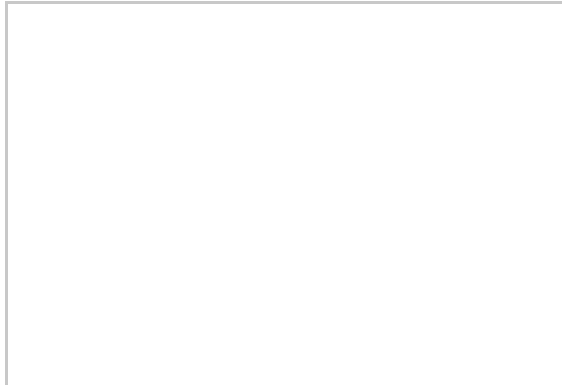
Open plan kitchen/lounge

Unfurnished

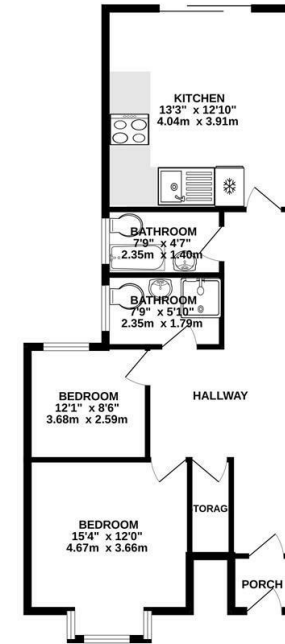
Available in April

Available Date

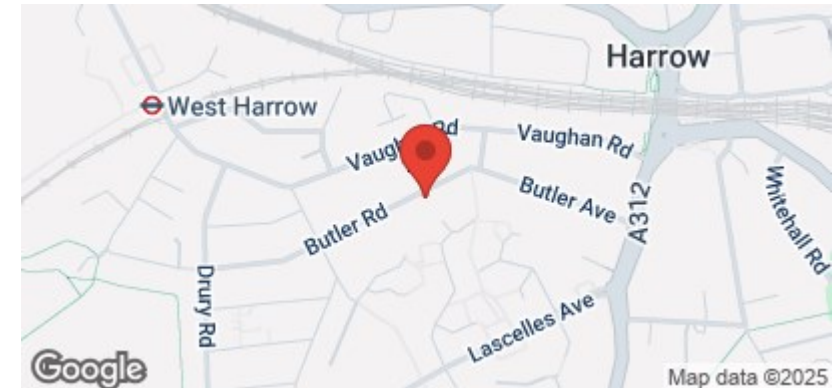
24th April 2025



GROUND FLOOR
697 sq ft. (64.8 sq.m.) approx.



TOTAL FLOOR AREA : 697 sq ft. (64.8 sq.m.) approx.
Whilst every attempt has been made to ensure the accuracy of the floorplan contained here, measurements of doors, windows, stairs and any other items are approximate and no responsibility is taken for any error, omission or mis-statement. This plan is for illustrative purposes only and should be used as such by any prospective purchaser. The services, systems and appliances shown have not been tested and no guarantee, as to their operability or efficiency can be given.
Made with Metropac (2023)



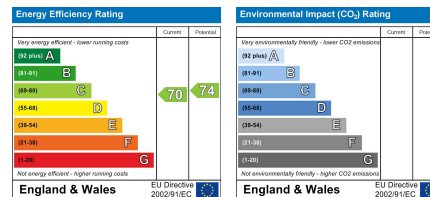
coopers
est 1986

0208 017 6000

**18 Bridge Street, Pinner,
Middlesex, HA5 3JF**

pinner@coopersresidential.co.uk

CoopersResidential.co.uk



Important Notice: These particulars, whilst believed to be accurate are set out as a general outline only for guidance and do not constitute any part of an offer or contract. Intending purchasers should not rely on them as statements or representation of fact, but must satisfy themselves by inspection or otherwise has the authority to make or give any representation or warranty in respect of the property.